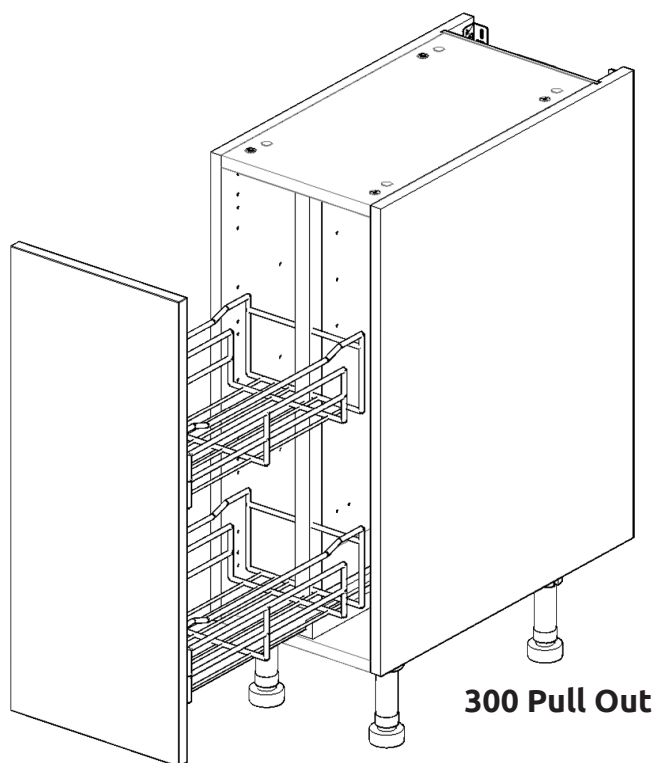
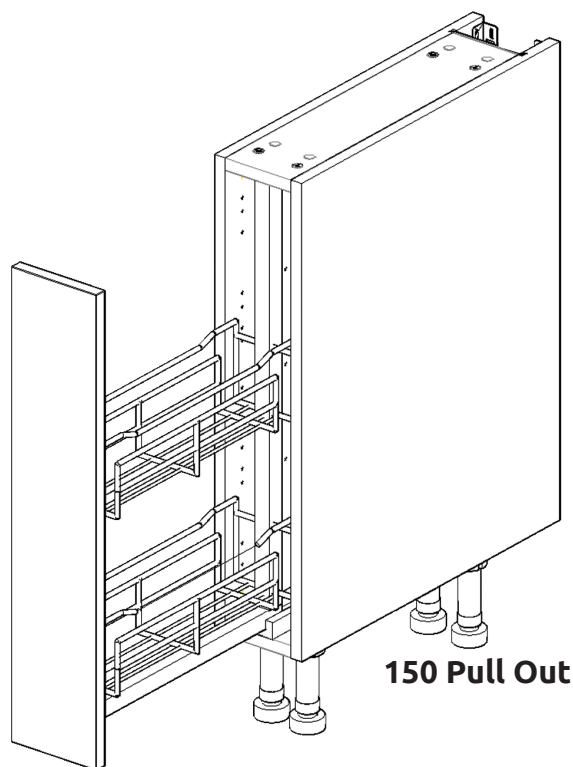


Vogue

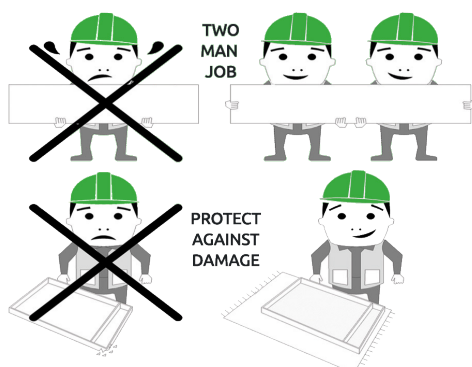
BASE UNIT

150 - 300 Pull Out Assembly Guide



BASE UNIT

150 - 300 Pull Out Assembly Guide



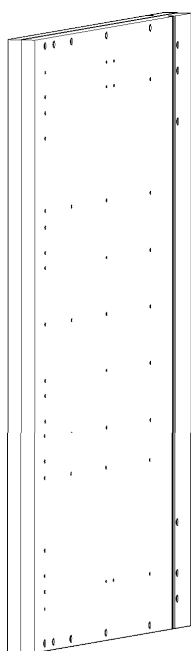
BEFORE YOU START

INSTALLATION
SHOULD BE
PERFORMED BY A
COMPETENT
PERSON ONLY.

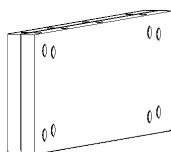
THIS PRODUCT COULD
BE DANGEROUS
IF INCORRECTLY
INSTALLED



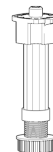
Panel A
x1 Back Panel



Panel B
x2 End Panel



Panel C
x2 Base Fixed Panel



Legs
x4



Frontal
(Packed separately)
x1



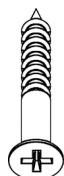
(F) x8
Wooden Dowel



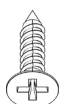
(G) x8
Cam Dowel
(Expanding)



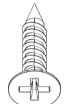
(H) x8
Cam Lock



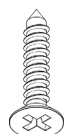
(K) x6
30mm
Screw



(L) x20
15mm
Screw



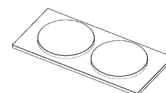
(J) x6
16mm
Runner
Screw



(X) x8
19mm
Screw



(M) x4
Cover
Cap



(N) x1
Door
Buffer

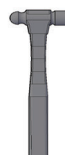


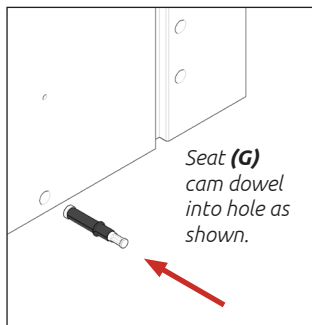
L Bracket LGE
x2

REQUIRED TOOLS

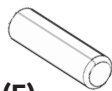


NOT to be used
with CAM DOWEL
& CAM LOCK

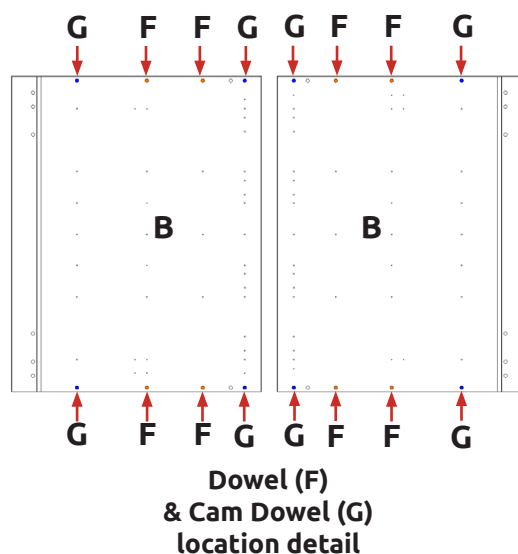
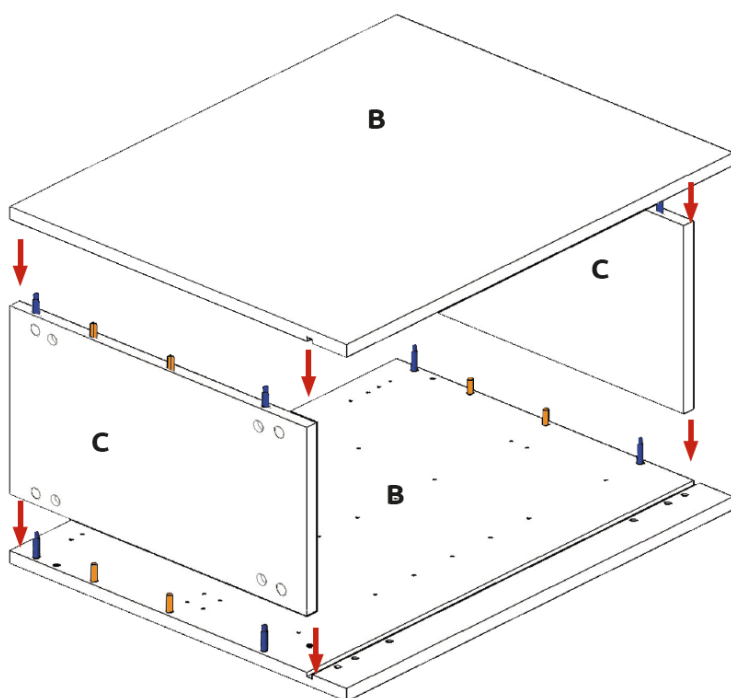
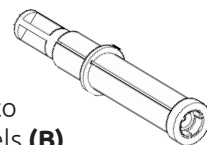




Step 1.
Seat dowel (F)
into holes in
both end panels (B)
as shown.



Step 2.
Seat cam dowel (G)
into holes in both end panels (B)
as shown.

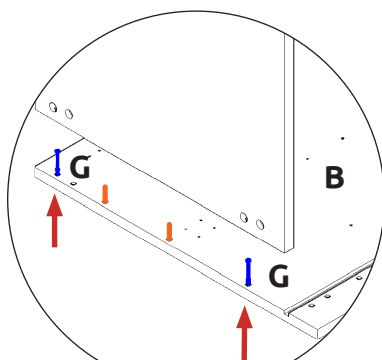


Step 3.
Attach panels (C) to panels (B),
using cam dowel (G) (in blue), and
also using dowels (F) (in orange) in
positions as shown.

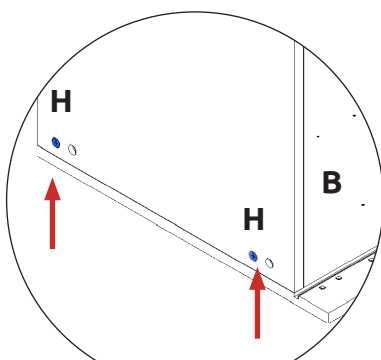


All Cam Locks (H) are to be positioned facing the outside of the unit carcase, for ease of tightening.

Do **NOT** use power tools with
cam dowel (G) or cam lock (H)



View from underside



View from underside



Step 4.
Insert cam lock (H).
Do **NOT** tighten until Step 6.

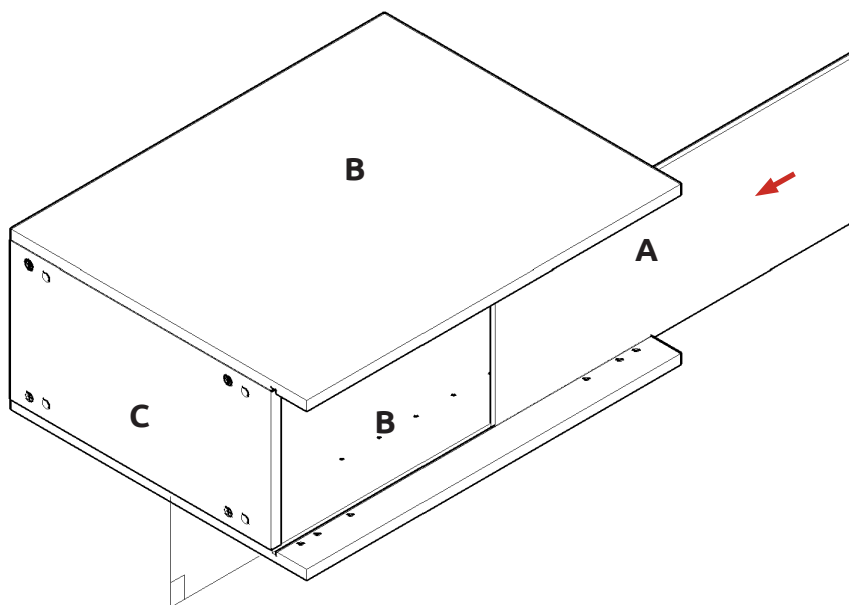


BASE UNIT

150 - 300 Pull Out Assembly Guide

Step 5.

Slide back panel (A) into groove of end panels (B). Once back panel (A) is in position, ensure the panel is flush & square with bottom of end panels (B).



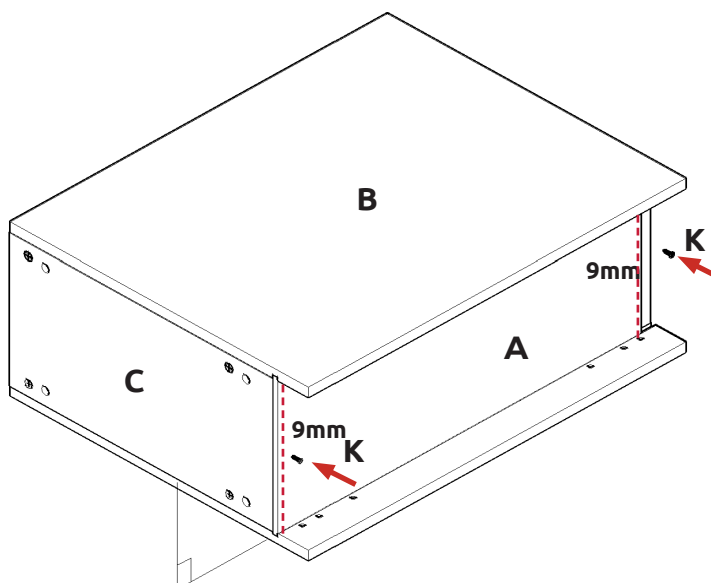
Step 6.

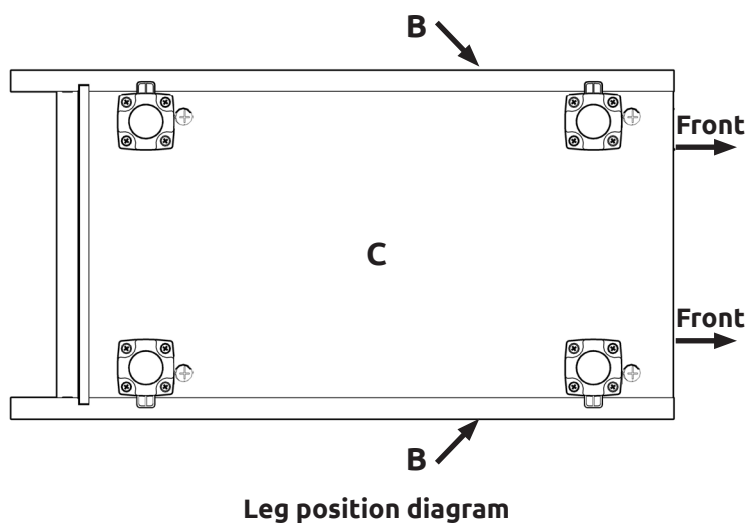
Ensure unit is square. Hand tighten all cam locks (H), this will expand cam dowels (G) and tighten the unit together.

Step 7.

Secure back panel (A) with 2 x 30mm screws (K) equally spaced at the top & bottom of back panel (A) into both fixed panels (C), as shown.

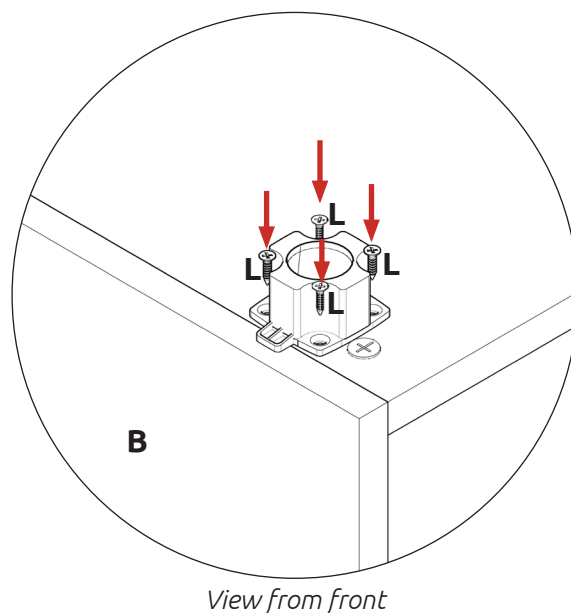
Ensure you screw into the centres of the base panels (C) (9mm from the edge).





Step 8.

Position legs as shown. Ensure legs are rotated to also provide support to the end panels (**B**).

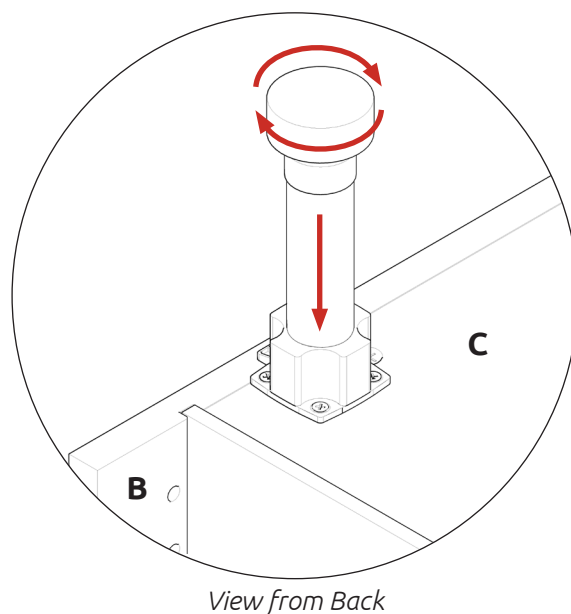


Step 9.

Secure each of the legs into place with 4 x 15mm screws (**L**) per leg.

Step 10.

Push leg firmly down into leg base.
Adjust legs to 155mm before turning unit upright. Once in situ level accordingly.



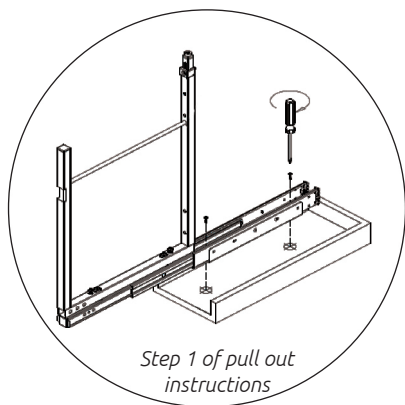
BASE UNIT

150 - 300 Pull Out Assembly Guide

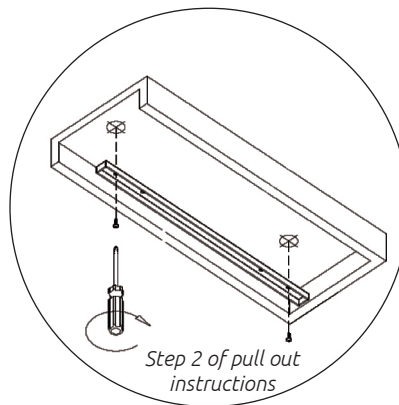


Pull Out Pack

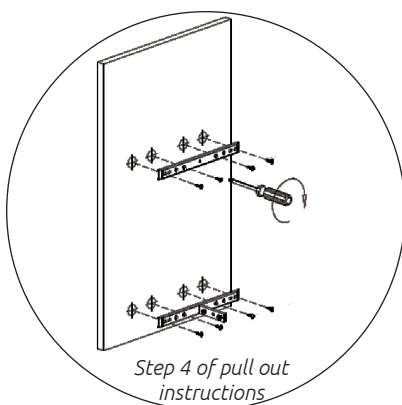
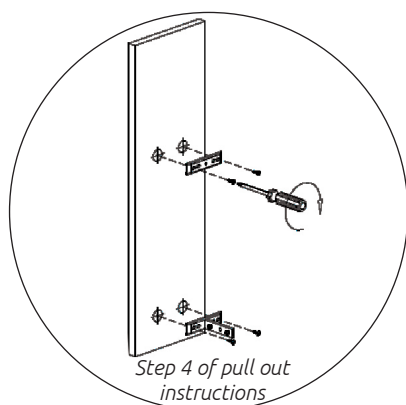
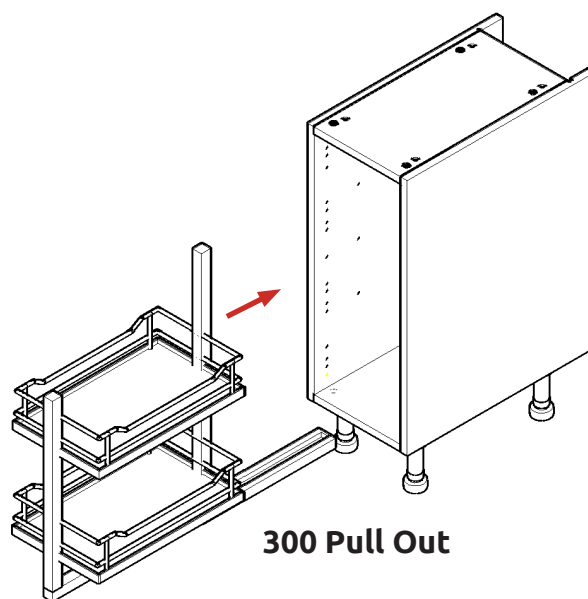
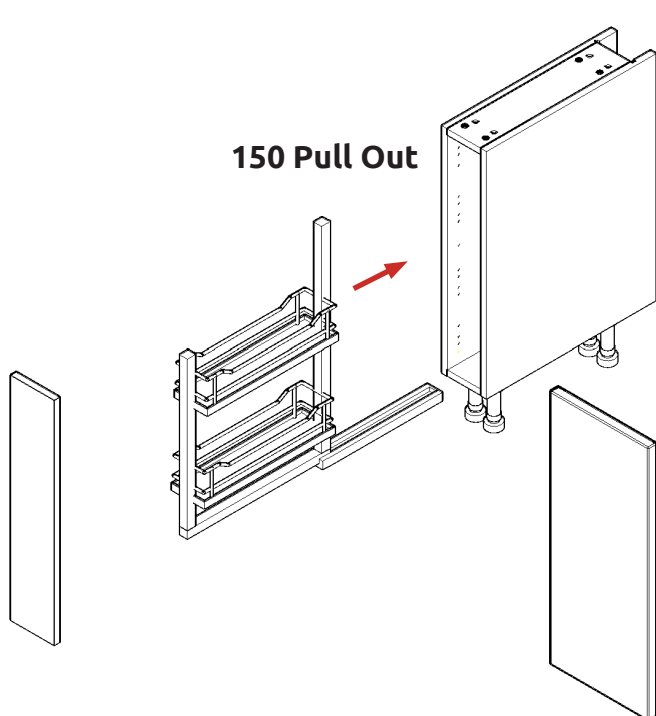
Please refer to separate installation instructions included with your pull out contents.



For Step 1 in pull out instructions.
Use 16mm screws.



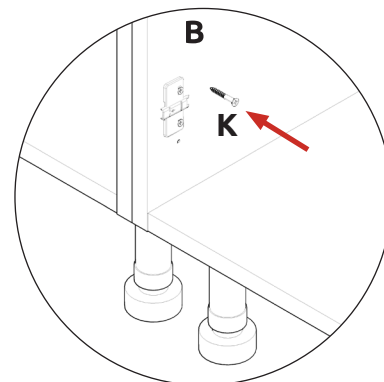
For Step 2 in pull out instructions.
Use 16mm screws.



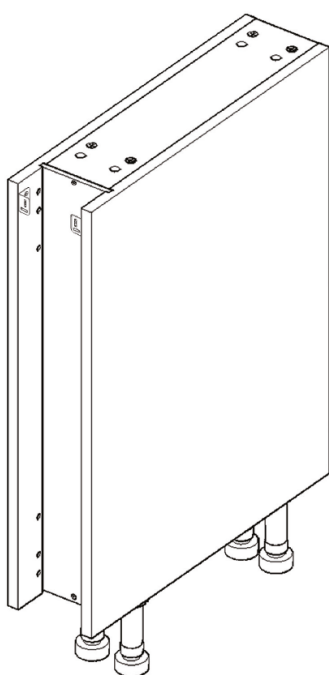
For Step 4 in pull out instructions.
Use 16mm screws.

Screw to Adjacent Unit

Screw through side panels (**B**) where appropriate, into any side units, using the 30mm screws (**K**) provided to secure to unit. Place a cover cap (**M**) on the head to conceal it.

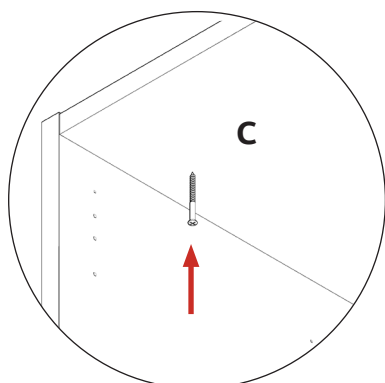
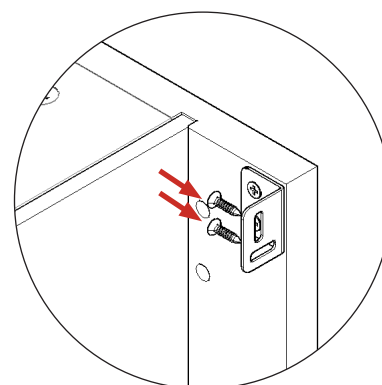
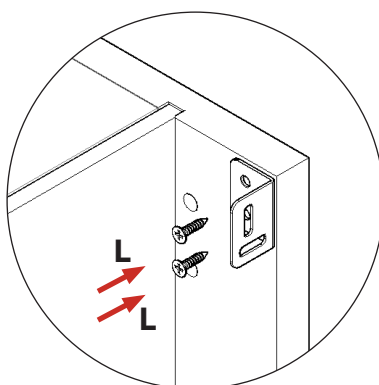


Screws for attaching to walls and worktop are not provided as these vary depending on materials, thickness and construction. Ensure appropriate fixings for wall and worktop construction are used. Please refer to the specialist worktop supplier if these are required for solid surface worktops.



L Brackets

Where applicable, secure unit to the wall using 2 x 15mm screws (**L**) to secure each of the L brackets LGE to the units at either side. Then screw through into the wall as shown.



Worktop

Screw up through panel (**C**) into your worktop to secure it in place.

