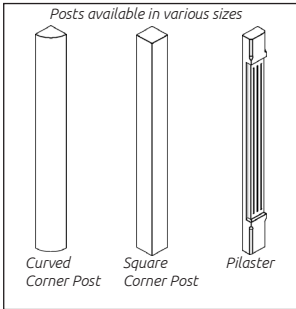


ACCESSORIES

Curved & Square Corner Post or Pilaster Attachment Guide



BEFORE YOU START

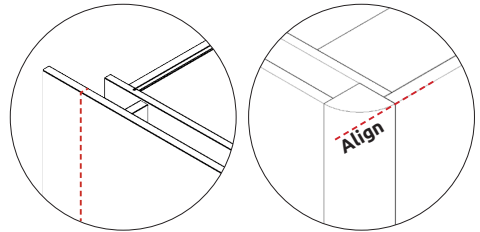
INSTALLATION SHOULD BE PERFORMED BY A COMPETENT PERSON ONLY.

THIS PRODUCT COULD BE DANGEROUS IF INCORRECTLY INSTALLED.

Step 1.

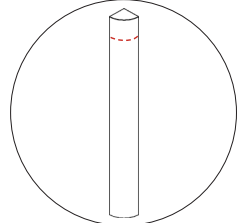
Scribe/cut the back of the **décor end panel** to the wall. If the height requires cutting/ scribing, ensure it is done on the top edge.

Include the size of the Post in your measurements, so that it aligns with the frontals. When cutting the décor end panel a table or circular saw is recommended. Use appropriate blades if a jigsaw is needed.



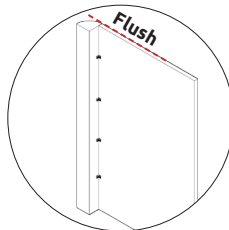
Step 2.

If required, cut the post from the top to required height. **See customer specific kitchen plan for reference.**



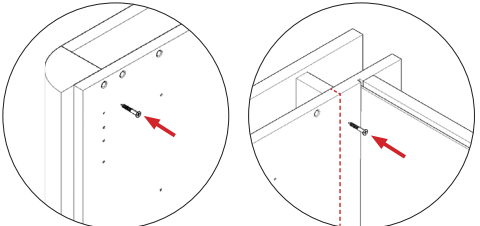
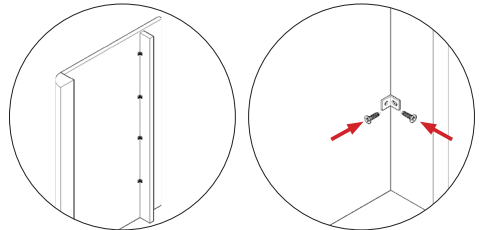
Step 3.

Fit **4 x L brackets SML** on the front edge of the décor end panel and then attach to the post using **15mm screws** provided. **Ensure décor panel sits flush with post.**



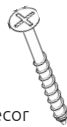
Step 4.

Fix filler panel to rear of décor panel using **4 x L brackets SML** and the **15mm screws** provided.

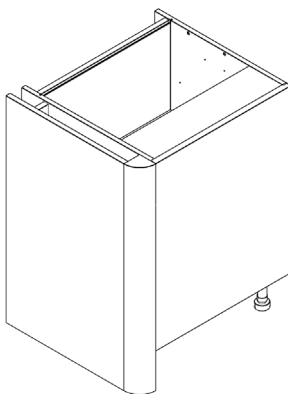


Step 5.

Attach the assembled décor end to unit with **2 x 45mm screws** from inside of unit, through to the post. Then **2 x 45mm screws** from inside of unit, through to the filler panel.



The screws should be equally spaced and positioned so they are least visible.



Base installation shown for illustration purposes.

