

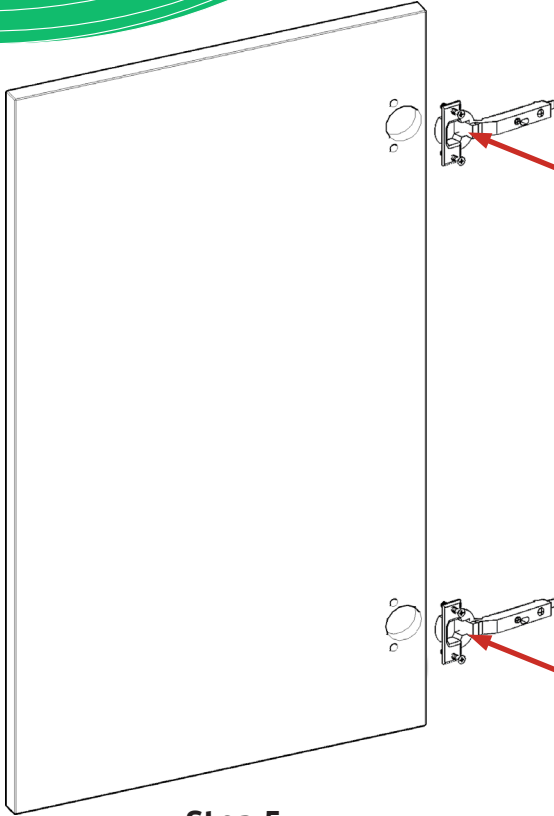
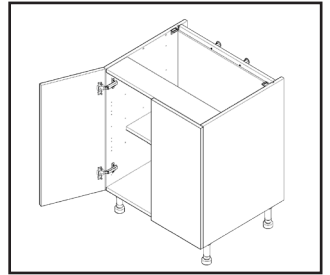
FRONTALS

Door with Hinge - Infinity +

Replacement Frontal Attachment Guide

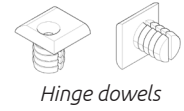


For frontals with cabinet mechanisms, see specific mechanism instructions for frontal attachment guidelines.



Step 1.

Discard existing hinge dowels and replace with new ones provided.



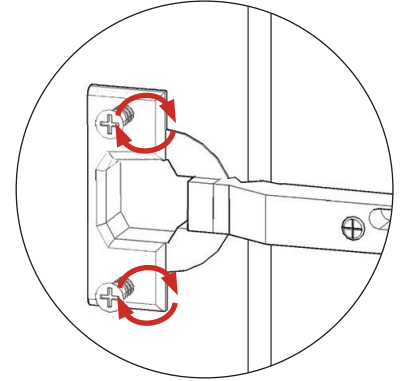
Hinge dowels

Step 2.

Insert hinge into hinge holes provided, in accordance with customers plan.

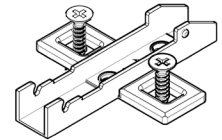
Step 3.

Secure hinges with the 2 x original screws.



Step 4.

Attach the door to unit, clip hinge onto hinge plate and click to secure.



Hinge Plates

Step 5.

Adjust hinge to suit. As shown below.

FRONTAL HINGE ADJUSTMENT

To **adjust** hinge using a screw driver, tighten or loosen as required at points **1** & **2**.
Point **1** - In - Out
Point **2** - Left - Right

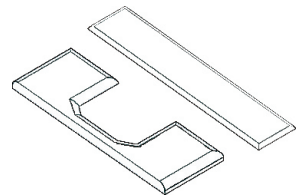
To **Move** the hinge up/down, loosen screws A + B, Manoeuvre the door, then re-tighten the screws

To **Release** door Pull catch as shown, to release hinge from the hinge plate.

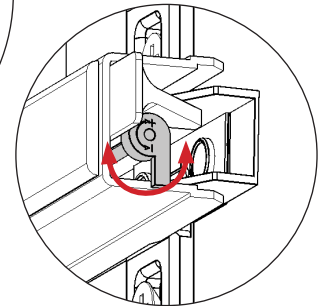
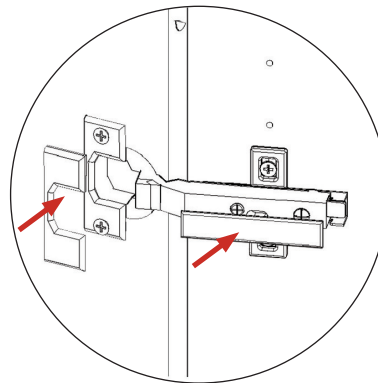
View from Inside of Carcase

Step 6.

Fit cover caps to hinge. Adjust Softclose to suit.



Hinge Cover Caps



The top and bottom hinges **MUST** be adjusted to the **SAME STRENGTH**.



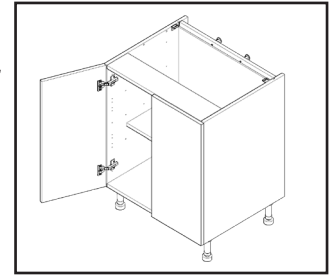
FRONTALS

Door with Hinge - Infinity

Replacement Frontal Attachment Guide



For frontals with cabinet mechanisms, see specific mechanism instructions for frontal attachment guidelines.



Step 1.

Discard existing hinge dowels and replace with new ones provided.



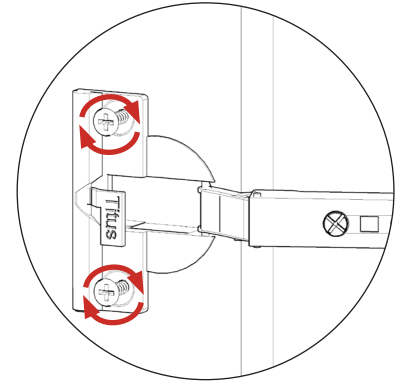
Hinge dowels

Step 2.

Insert hinge into hinge holes provided, in accordance with customers plan.

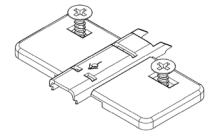
Step 3.

Secure hinges with the 2 x original screws.

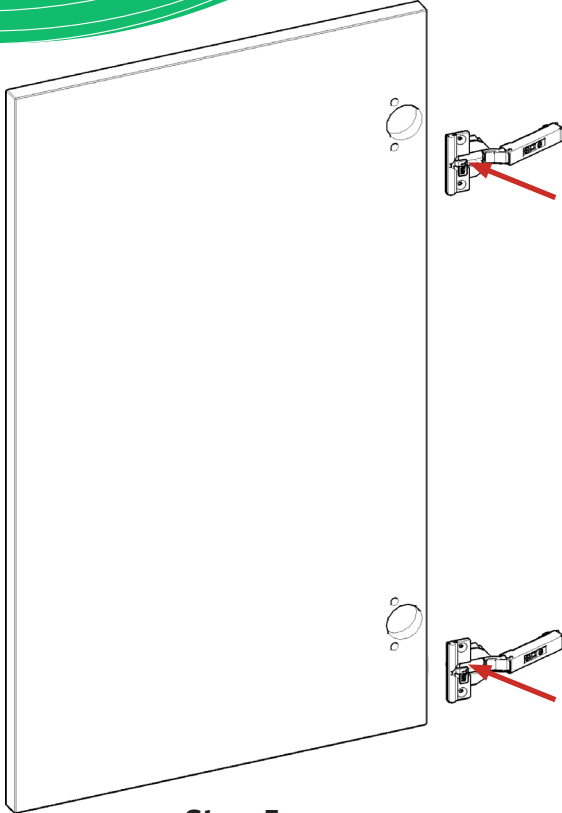


Step 4.

Attach the door to unit, clip hinge onto hinge plate and click to secure.



Hinge Plates

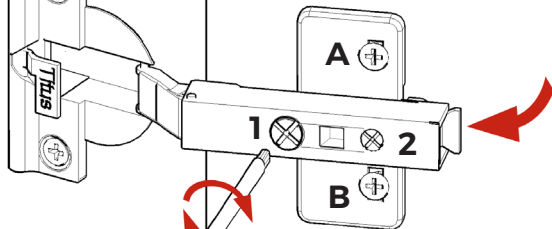


Step 5.

Adjust hinge to suit. As shown below.

FRONTAL HINGE ADJUSTMENT

To **adjust** hinge using a screw driver, tighten or loosen as required at points **1** & **2**.
Point **1** - In - Out
Point **2** - Left - Right



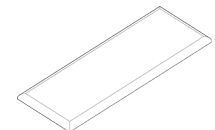
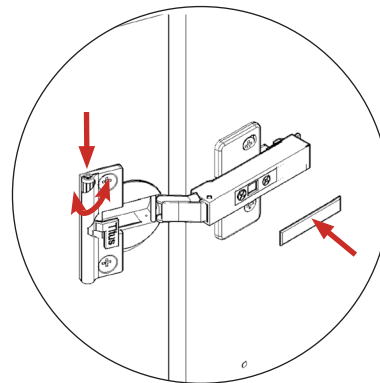
To **Move** the hinge up/down, loosen screws A + B, Manoeuvre the door, then re-tighten the screws

To **Release** door Pull catch as shown, to release hinge from the hinge plate.

View from Inside of Carcase

Step 6.

Fit cover caps to hinge. Adjust Softclose to suit.



Hinge Cover Caps

The top and bottom hinges **MUST** be adjusted to the **SAME STRENGTH**.

wren
KITCHENS