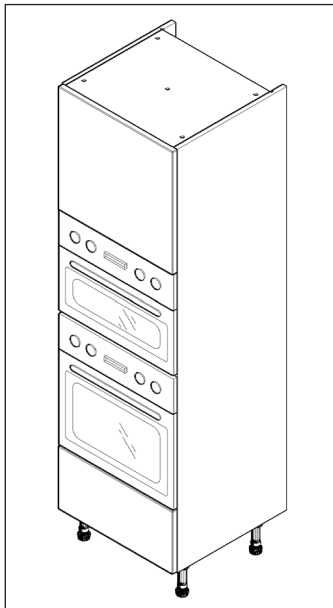


TOWER UNIT

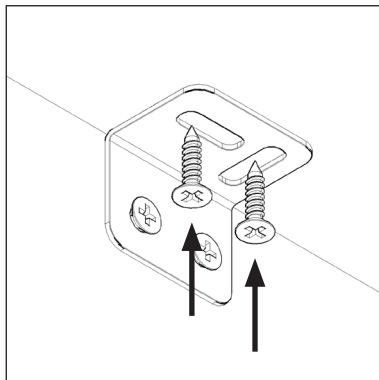
Stacked Appliance Shelf Guide



Always refer to the appliance manufacturers instruction for full installation guidelines.

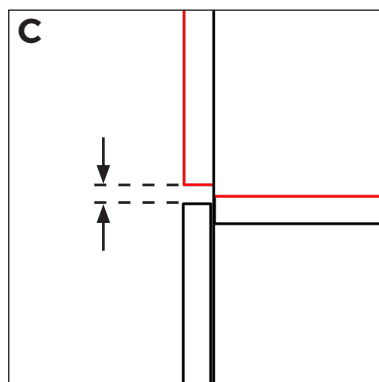
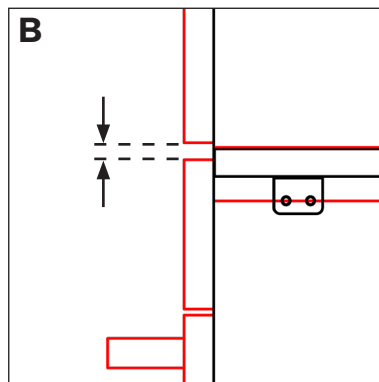
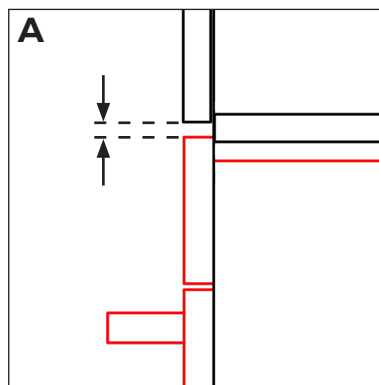


Example tower unit used for reference only.



Before inserting the appliances, secure loose shelf to tower using 4 x L bracket LGE with 4 x 15mm screws per bracket.

Maintain an equal spacing between the doors and ovens at points A, B and C.



SIDE ELEVATION

