

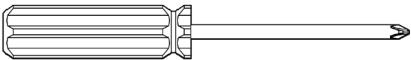
DRAWER BOX

ADJUSTMENT, REMOVAL

INFINITY

wren

Tools required:
Cross head screwdriver



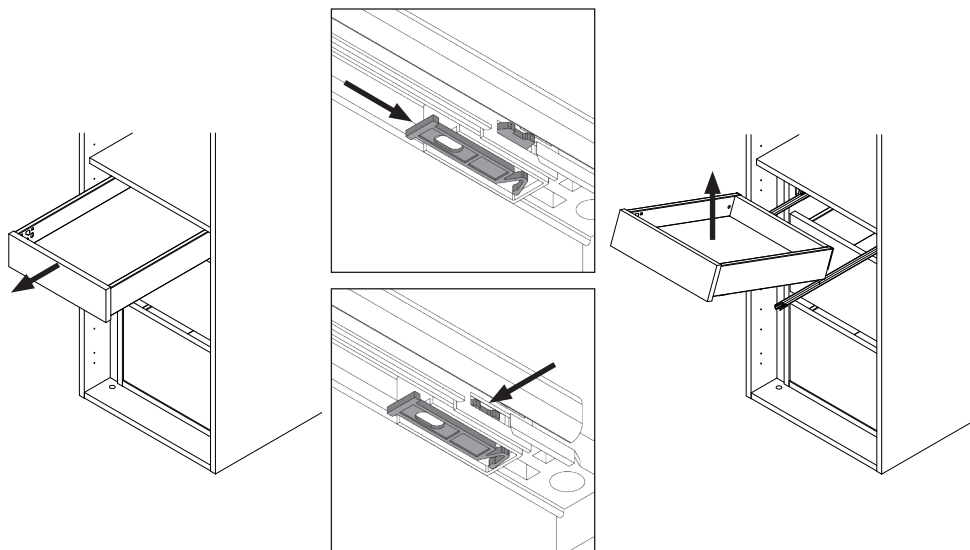
Standard

Deep

	<p>Up & Down Adjustment. Turn screw shown to adjust drawer frontal up & down.</p>	
	<p>Left & Right Adjustment. Turn screw shown to adjust drawer frontal left & right.</p>	
	<p>Fit Cover Caps. Fit drawer cover caps over drawer side adjustment. Standard: Position the top two corners first and press the cover cap against the drawer side to secure it in place. Deep: Position the cover cap against the long edge first press the cover cap against the drawer side to secure it in place. Repeat on the opposite side.</p>	

Step 1.

Open the drawer that is required to be removed. Pull out the drawer until the runners are at full extension. Press the locking mechanism to release the drawer from the runner and lift the drawer away from the runners.



Step 2.

Fully extend the drawer runners out of the unit. Place the drawer onto the runners, making sure that the groove of the drawer sides and the runner mechanism are aligned. Once the drawer is placed onto the runners, push the drawer back into the unit until a click is heard. Once the click is heard the drawer is properly located and secured to the runner.

