

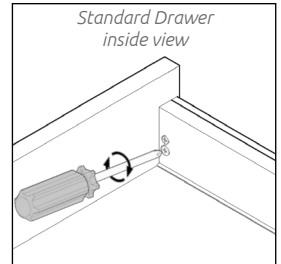
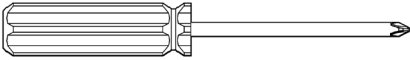
DRAWER BOX

ADJUSTMENT & REMOVAL

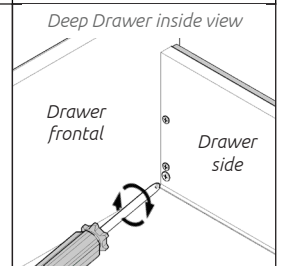
INFINITY PLUS

wren

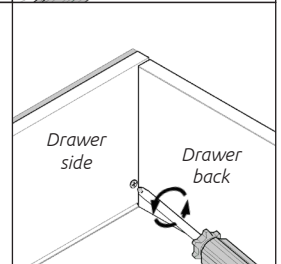
Tools required:
Cross head screwdriver



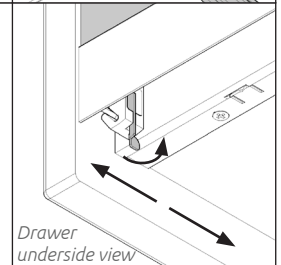
Up & Down Adjustment.
Standard Drawer
Loosen top screw and turn the bottom screw to adjust drawer frontal height, once in desired position re-tighten the top screw.
Deep Drawer
Loosen top two screws and turn the bottom screw to adjust frontal height, once in desired position re-tighten the top screws.



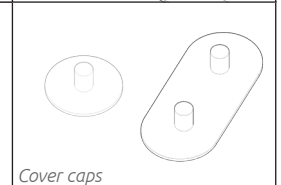
Rear Elevation Adjustment.
Deep Drawer Specific
Turn the screw at the back of the drawer to adjust rear elevation of the drawer.



Left & Right Adjustment.
Press in the fixing clips half way, located at the bottom of the frontal on both sides of the drawer. Adjust the position of the drawer frontal, left or right. Release the frontal fixing clips on both sides of the drawer to secure the frontal in the new position.



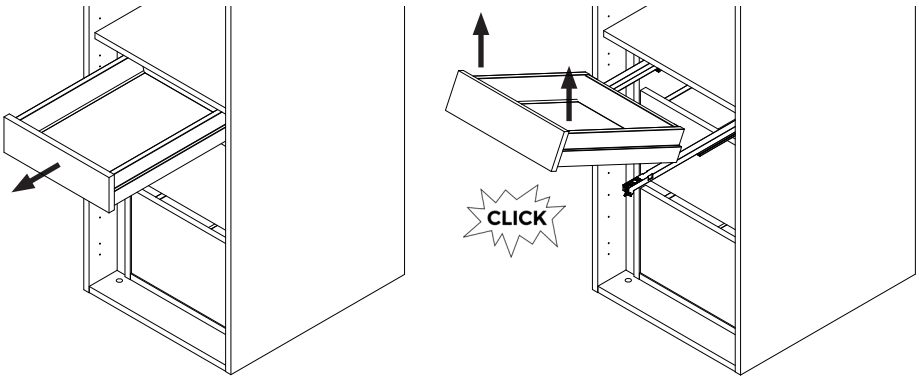
Fit Cover Caps.
Fit drawer cover caps over drawer side adjustment screws.



Step 1.

Open the drawer that is required to be removed. Pull out the drawer until the runners are at full extension. In one smooth motion, lift the front of the drawer, this will disconnect the runner from the connectors on the base of the drawer. Once properly separated a click will be heard and the drawer will be separate from the runner.

If this motion is not done with enough force then the drawer may need to be lifted again. Be careful not to lift the runners whilst lifting the drawer.



Step 2.

Fully extend the drawer runners out of the unit (for the drawer you are inserting). Place the drawer onto the runners, making sure that the groove of the drawer sides and the runner mechanism are aligned.

Once the drawer is placed onto the runners, pull forward the protruding lips on the ends of the runners until a click is heard. Once the click is heard the drawer is properly located and secured to the runner. Push the drawer back into the Unit.

