

**wren**  
KITCHENS



All you need to know about your

**XenaQuartz®**  
WORKTOP





# Beautiful and built to last, Xena Quartz® gives your Wren kitchen a unique finishing touch.

A Xena Quartz® worktop is an investment in style and substance. Our advanced engineering process combines the natural beauty of stone with all the benefits of modern technology.

This means you can enjoy the look and feel of raw materials without the inconsistencies you get with materials such as granite, which all vary in their pattern and tone.

Made using natural minerals, Xena Quartz® has a hardness and density that is resistant to shock, scratching and staining with a highly polished finish.

Tougher than granite yet silky to the touch, this is a sumptuous surface to work with yet so easy to clean and maintain. A touch of unique glamour that with care will never fade.

## Contents

<b>Why choose Xena Quartz®</b>	<b>05</b>
<b>Edge profile and colour guide</b>	<b>06</b>
<b>Crafting your worktop</b>	<b>08</b>
<b>The finishing touch</b>	<b>10</b>
<b>Our Islands</b>	<b>12</b>
<b>What to expect from your Xena Quartz® worktop</b>	<b>14</b>
<b>How to care for your Xena Quartz® worktop</b>	<b>15</b>
<b>Ordering and Installing your Xena Quartz® Worktop</b>	<b>16</b>





# Why choose XenaQuartz®

Cut by us to your specifications, Xena Quartz® worktops are a sophisticated choice that stand above materials such as granite when it comes to durability, flexibility and consistency. Xena Quartz® will perfectly complement your dream kitchen.



In 2019 we began fabricating Xena Quartz® worktops in-house - this means we can guarantee a high level of quality and low prices.

Engineered from natural minerals, every Xena Quartz® worktop is unique. For more traditional kitchens, there are natural tones and classic veining patterns that perfectly mimic marble and granite.

For modern and handleless kitchens, dramatic colours and effects such as reflecting mirror particles make bold statements.

Just like raw stone, the particle structure of the natural minerals varies so every worktop is unique with an individual pattern and tone that has no twin. What you see in the Showroom gives a good indication of what to expect but your Xena Quartz® worktop will be unique to you.

Unlike with Granite, we can limit contrasts and make Xena Quartz® as uniform as possible and we make every worktop for one kitchen from the same batch.

Because it is an engineered material, Xena Quartz® is designed to make for a tougher work surface than granite, it is shock, scratch and stain resistant as well as protected from heat - although you should always use a trivet.



# Edge profile and colour guide.

Available in 23 colours from dark Graphite Ice to elegant Statuario, you can be sure there's a Xena Quartz® colour that fits your style perfectly.

Your Xena Quartz® worktop is as unique as you are with cool greys such as Falcon Ice and Taurus, pristine whites like Arctic Starburst, Ultra White and Aspen Ice or dramatic darks like Midnight Starburst, Graphite Ice and Scorpio.

There are a wide range of patterns and textures to energise any space and add natural flair or rustic appeal to your kitchen.

Why not try the dappled grey of Timberwolf, or the ancient stony feel of Atlas White? Or evoke the luxe feeling of marble with the graceful lines of Statuario or Anthracite.

The double bevelled edge of Xena Quartz® worktops work in any setting, from the stately to the stylish.

Because the material is made using natural minerals, the colour, pattern and tonality of each worktop will vary slightly from the samples in this guide and what you see in the showroom, which are an indication of colour only.

We use our expertise to ensure a high degree of consistency compared to other natural materials and each kitchen's Xena Quartz® worktop is made from a single batch of material so that every section of your worktop is in harmony with one another.



**Double Bevel**

## Granite Style

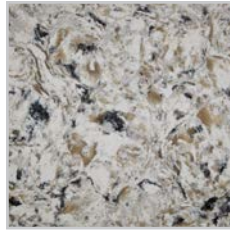
---



**Timberwolf**



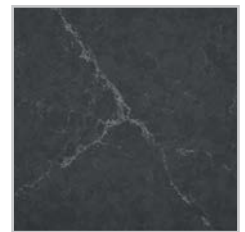
**Atlas White**



**Highland White**



**Titan**



**Anthracite**

## Marble Style

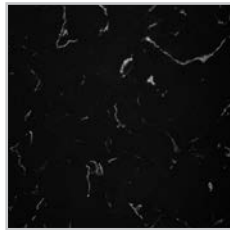
---



**Venice**



**Taurus**



**Scorpio**



**Capri**



**Ultra White**

## Marble Style

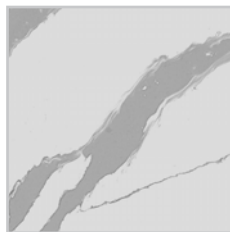
---



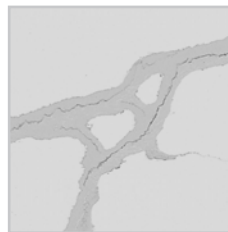
**Statuario**



**Arabescato**



**Bellagio**



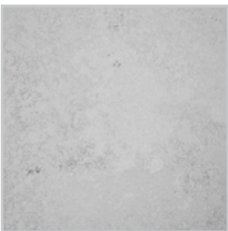
**Valenza**



**Treviso**

## Cement Style

---



**Cement Lux**



**Cement Noir**



**Aspen Ice**



**Falcon Ice**



**Graphite Ice**

## Sparkle Style

---



**Arctic Starburst**



**Iron Starburst**



**Midnight  
Starburst**

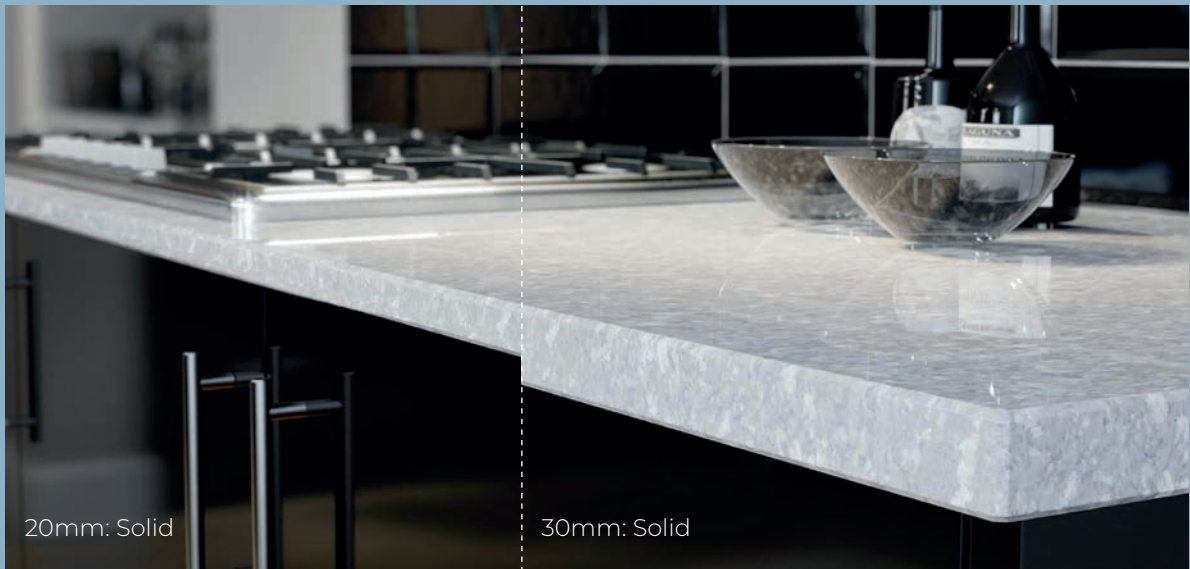


# Crafting your worktop

Choose the thickness, corner and finish to suit your tastes.

Our Xena Quartz® worktops come in a 20mm or 30mm thicknesses

The maximum size of Xena Quartz® worktop available (before a joint is required) is 3000 x 1350mm



## Corners

You don't need to cut corners when it comes to designing your perfect worktop. From a simple slight rounded edge to elegant curves, the various options on offer mean that even the fine details of your dream kitchen can look exactly as intended, from soft and stately to modern and industrial.



**Rounded**



**Curved Post**



**Door Curve**





# The finishing touch

Making your Xena Quartz® worktop fit your kitchen style.

## Downturns

Tie your units and your worktop together by using additional pieces of Xena Quartz® at the end of a run of units or as the end of an island or peninsula.

These panels are not designed to be a form of support to the worktop but when placed against the side of a unit create effortless style.

Please note for 20mm thicknesses, the end panel must back onto a kitchen décor panel.

## Upstands and wall cladding

Create a Xena Quartz® upstand on your kitchen wall to effortlessly finish off your work surface. It's perfect for classic, traditional or modern kitchens

Upstands are available from 50mm to 200mm in height from the work surface with a maximum length of 3000mm

Anything over 200mm is classed as wall cladding, this is an excellent way to create a feature wall that blends seamlessly into your kitchen, with the added benefit of protecting the wall from spills and stains.

You could even create a contrast by using a different Xena Quartz® colour for some added drama.

## Splashbacks

If you want to protect your wall from splashes and cooking stains but keep the elegance of your Xena Quartz® worktop, then why not try a splashback?

Splashbacks are available in any size within the parameters of the material, but please take into account any shaping that might be needed around extractors and their fixings.

Please note that the centre of any burner on a electric hob should be at least 50mm from the upstand or splashback, and 150mm from the centre of any gas burner.



Downturn in Aspen Ice



Wall cladding and upstand in Arabescato



Splashback in Ultra White



### Sink grooves

Sink grooves are useful to help collect water around the sink area.

Sink grooves are sloped but any water that collects in sink grooves should be wiped down.

### Hob bars

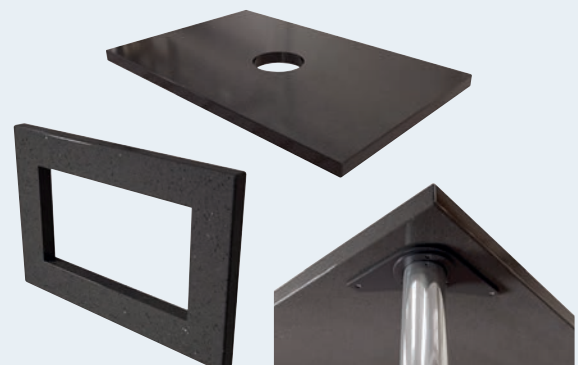
When placing any hot item on your work surface, from pans to baking trays and everything in between, you must always use a trivet to protect the surface.

By adding hob bars to your Xena Quartz® worktop you will always have one to hand immediately.



### Window sills

Window sill shapes and overhangs can vary according to how you would like them to look. Sills are the same thickness as your upstands or cladding.



### Other extras

- Pop up socket
- Electrical socket cut-out
- Leg support preparation



# Our islands

At Wren Kitchens, we'll help you design your own island, one that's a perfect fit for you and your kitchen. Islands can be made up of a run of back to back units or single units to complement or contrast with your chosen range. Whatever you choose, it will be an island made just for you.

Please note that islands can only be a maximum of 3000mm long before requiring an additional piece of worktop with a join.



## Built in units and appliances

Make your island an efficient workstation with stacks of drawer units for greater visibility. Plumb in an appliance such as a fridge, wine cooler or washer. Build in a hob and sink and use it as your main cooking area.

## Take your seats

If you have the space, turn your island into a kitchen diner. Carefully designed worktop overhangs can become great breakfast bars or casual dining areas. Extend a Xena Quartz® worktop and create an elegant place for dining.





## Personal features

Style up your island with special feature units. There's wine racks, open shelves, and cook's tables to choose from. Or make your island a home for your pet with a pet bed. There are so many special features - in so many shapes and sizes - that your island will be unique.



## Sizes and shapes

Square and compact or long and rectangular, the shape of your island - and its size - depends on your home as well as your taste. Soften edges with curved corners and use the ends to display your treasures or most used kitchen appliances on open shelves. Short on space? Opt for a fantastic peninsular instead and personalise with an open shelf or workstation.



## What to expect from your Xena Quartz® worktop

Xena Quartz® worktops have a high degree of consistency compared to other natural materials and colour variation is low - however colour, pattern and tonality are not totally uniform. Remember, what you see in the Showroom is only a sample and provides an indication of colour only, not an exact match.



The unique particle structure of each piece of Xena Quartz® can affect veining and marbling consistency but only to a small degree. Small spots and faint patches can also occur naturally - this is part of the unique charm of the natural minerals.

Some colours are less consistent than others, particularly if there is marble veining, this can highlight joints, especially if there is a change in grain direction. If you are having several worktops or very long runs, talk to your designer for advice on what colour will best suit your needs.

Starburst colours have a mirror particle mixed in for a naturally sparkling look, it is distributed randomly so does not always face the surface. Resin is used to fill very small naturally-occurring air holes and where mirror particles detach during manufacturing.

Xena Quartz® worktops have a highly polished finish, this can make the cut edges of sink grooves and edge profiles look slightly duller in comparison.

Xena Quartz® is available in two thicknesses - 20mm and 30mm. It comes in slabs of 3000 x 1350mm, larger designs will require two or more slabs joined together and filled with colour matching glues; joints are approximately 2-4mm wide. See page 20 for more details on expansion joints. Size does also depend on access to your kitchen and unit support, as Xena Quartz® is very heavy.



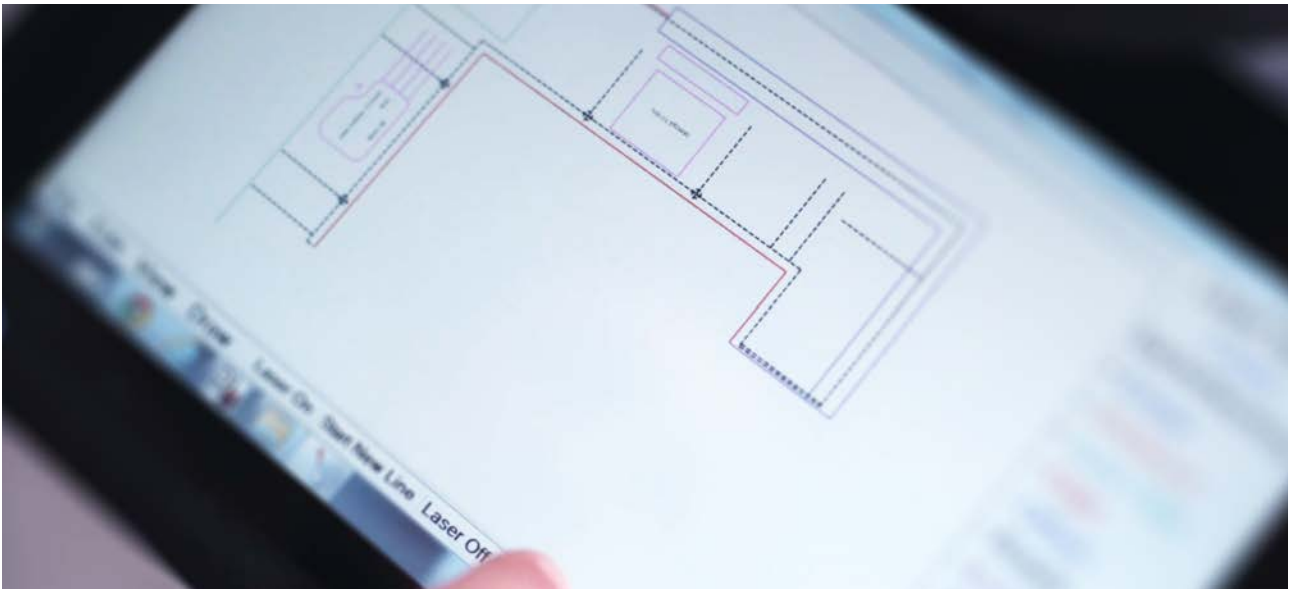


## How to care for your Xena Quartz® worktop

- Clean up any spills of household items such as tea, coffee, wine, vinegar, fruit juice and cooking sauces quickly. Use a damp cloth and, if necessary, a small amount of non-bleach, non-abrasive liquid cleaner.
- For more stubborn items use a household cream cleaner with a non-abrasive cleaning pad. Then rinse the area thoroughly with water and dry with paper or cloth towels. For best results, wipe and dry in smooth circular motions with a lint-free cloth.
- If a stain has dried and is more difficult to remove, start by removing any excess with a blunt plastic scraper, then clean the surface with a damp cloth and if necessary a small amount of non-bleach, non-abrasive household cream cleaner. Rinse thoroughly and dry with paper or cloth towels.
- Stripping agents, grease removers, caustic soda or products that have a pH value above 10 shouldn't be used on your worktop. Also avoid solvents which contain dichloromethane, chloromethane or methylene chloride.
- Oils, chemicals, dyes and solvents can permanently damage your worktop. If you spill any on your Xena Quartz® worktop, blot them up immediately and rinse with plenty of clean water. Dry with paper or cloth towels and for best results wipe and dry in smooth circular motions with a lint-free cloth.



- Takeaways such as curries can contain oils and dyes which can stain a Xena Quartz® worktop - it's best to clean up spills as soon as possible.
- Xena Quartz® can withstand a certain amount of heat but trivets should always be used.
- Chopping boards are recommended and avoid dropping, knocking or rubbing objects on the edge of your worktop.
- Your Xena Quartz® worktop comes with a care and maintenance kit.

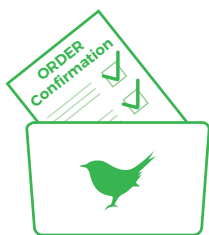


## Ordering and installing your Xena Quartz® worktop

Your Xena Quartz® worktop is made to order for your kitchen in our own UK manufacturing facilities. For it to be the beautifully perfect fit and finish you expect, you'll play a very important part in the planning and decision-making process. Xena Quartz® worktops are produced to a template that can only be taken when your kitchen is complete. To help you understand what's involved and why we need your input, here's a guide to how we make and install a specialist worktop.

### Order Confirmation

---



#### Order confirmation

When you order your worktop, your Wren Kitchen Designer will help you choose the right material, colour and design choices for your kitchen design.

Please highlight any issues that will affect access to your home and kitchen. Narrow stairs and corridors will limit what size worktop you can order as a single slab as we won't be able to manoeuvre it into position.



#### Booking a template date

As soon as your kitchen order is placed, you'll receive an email confirming your worktop selection. Once you have signed your contract we will email you to book a date for the templating part of the process. If no template booking has been made when your kitchen is delivered we will contact you after one, eight, 30 and 60 days until a date is confirmed.

Cladding will require two templates so that we can ensure a perfect fit.



### Confirm or change

Two days before the appointment, we'll text to make sure your kitchen is on track for completion. The day before your appointment, we'll contact you to confirm and let you know our arrival time. To avoid cancellation charges, please notify us the day before your templating date if you need to change the date.

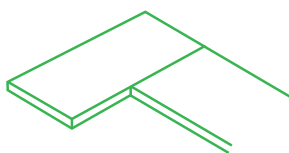
## Templating

---



### Double checking your order

Templating will include confirmation of your order details and you'll be shown a sample of the worktop you have chosen. Please check that the colour and finish is correct and you are happy with what is included such as sills, upstands, splashbacks, sink grooves and other details. Any additional costs or items resulting from changes in your order need to be paid in full immediately to Wren so that your worktops can go into production. These changes cannot be added to your finance agreement at this stage. Always check with your Kitchen Designer if you are unsure.



### Positioning joints

Our Templating Team will discuss with you where best to position joints, the precise positioning of appliances and any additional items requested to ensure a perfect fit and finish. Make sure you understand and are happy with the final decisions made. The team will also check access to your home to make sure that the worktop will be able to make it to your kitchen.

We'll take laser measurements of your kitchen and advise on any work that needs to be carried out before installation. Once you are happy with the template, you will be asked to sign a digital completion form and photograph.

Because we produce every worktop to order, you may be without a worktop - and water - in your kitchen for several days before your worktop can be fitted. Templating usually takes from one to two hours but can be up to four hours depending on your kitchen size.



### We need you... and your fitter

**You or your appointed representative must be present during templating to make vital decisions - we'll text you an hour before arrival.** We'll

need to know which side you would like sink grooves, position of joints and for you to confirm the material. If no one can attend, your order will be put on hold until the team can reschedule. This could delay the installation of your worktop and you may be charged a cancellation fee.



# Templating continued

---



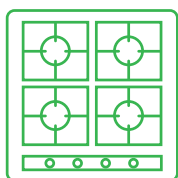
## Be prepared

To accurately measure your kitchen, we need a clear level floor to put the laser templating machine on. Please remove all tools, small appliances and crockery as well as any temporary worktops so the kitchen is clear of everything except units and appliances. Pets and children need to be kept safely out of the way.



## Power and parking

Our Templating Team will need to be able to park onsite - so please remember to get a permit if one is needed. They'll also need access to power and adequate lighting to make the template.



## Appliances and pop-up sockets

We cannot complete a template without every appliance being present. To help make the templating process run smoothly and prevent delays, our Templating Team needs all appliances - freestanding, side-by-side and integrated appliances - to be fitted but unplugged. This does not include tower appliances. The hob should not be installed until after the Quartz® has been installed. Please keep all boxes and template cut-outs that all new appliances/fittings came in so we can get accurate measurements - we will measure old appliances.

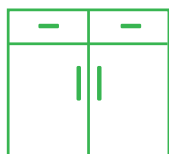
Sockets are fitted by the installer once the worktops are in place.

If you have appliances next to each other - such as washer and dryer - then you must have a decor panel in between to support the weight of the worktop.



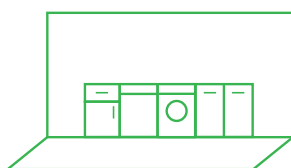
## Sinks and taps

All sinks including Belfast sinks and taps need to be in their final positions for templating but not connected.



## Kitchen units

All base units need to be fitted, secured to the wall and each other and with end panels fitted. Units should be level to a maximum tolerance of 3mm. Unsupported areas need battens fixed to the wall and wall battens need to be fitted where there is no front or back rail over a span of 600mm. Battening into corners is also needed. Pelmet and lights on wall units need to be removed - or be fitted only after worktop installation.



## Walls and floors

Walls should be finished - in good condition, cladded and or plastered - and not be subject to change between the templating and the installation of the worktop. Sometimes, because of material intolerances, we do need to cut or chisel into walls during installation. Because of this, we recommend that tiling and decorating is left until after installation and you are completely happy with your kitchen and worktop. Floors need to be clear and level - for special designs the floor needs to be as level as possible.

# Production and lead times

---



Once your template is complete, and approved by you and any alterations and additional requests paid for, we will start to produce your worktop.

## Lead times

The production of Xena Quartz® can take from five to 10 working days from template to sign off, depending on the complexity of finish, thickness, edging, cut-outs and special additions such as sink grooves.

Your worktop will arrive ready cut with top surfaces polished and ready to install - apart from downturns which are trimmed to fit onsite.

# Delivery

---



## Check your order

Please make sure that your order - including colours, special options and finishes - is correct and matches the order documentation before installation. Please note that if it is not on the order it isn't included in the delivery or the price.



## Confirmation calls

You will be contacted 48 hours before your Xena Quartz® installation to remind you about what will happen on the day of the installation. On installation day, the team will call you to confirm delivery one hour before they are due to arrive. Please ensure that you or your representative is present for delivery and installation.



## Parking space and permits

Our Installation Team will need to be able to park as close as possible to the entrance to your home - so please make a space on your drive, reserve a place on the street or get a permit if one is needed. Access issues to the kitchens may result in the worktop being cut, meaning there will be more joints.

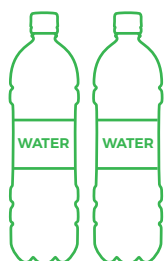


## Health and safety

Specialist worktops are large, inflexible and heavy objects that need careful handling. Health and safety is a priority and to ensure that our teams can do the best job, the access route from our delivery vehicle to your kitchen must be clear. We recommend that you keep children and pets somewhere safe and out of the way. Please protect your flooring and remove all breakables and valuables from all access routes and the kitchen.

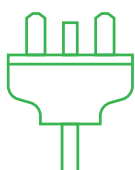
# Installation

---



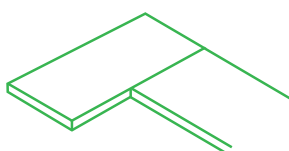
## We'll need you again

You or your representative must be present throughout delivery and installation. During this period, and for safety's sake, we suggest you make the kitchen a no-go area for everyone except for yourself and our team. Since the water supply will be switched off, bottling some water for later use is a good idea. An installation typically takes two to three hours but with larger kitchens it could take up to five hours.



## Light and power

Our Installation Team will need access to power and adequate lighting. Power tools will be used to complete final cut-outs and also make any final adjustments that we think will give a better finish. Upstands are always cut to fit precisely once the worktops are in place - where possible this cutting will be done outside with dust cleaned up as far as possible.

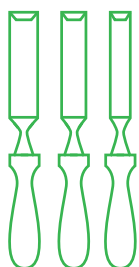


## Position of joints and appliances

All site joints will be prepared before worktops are brought into the kitchen.

The team will position worktops, according to the agreed template. Worktops will be siliconed to the units below - and silicone beading will be applied to the underside of the worktop where it meets the unit front. All joints will be resin glued together. Undermounted sinks will be fitted to the underside of worktops - however your own installer or plumber will need to install top mounted appliances. Your Installation Team will always check to make sure that the appliance fits within the cut-out. Due to the weight, we recommend that all porcelain/ceramic sinks are supported with a cradle and you should speak to your Kitchen Installer about this.

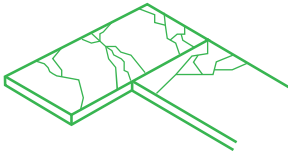
Although templating and cutting of Xena Quartz® is done with precision technology, there will always be slight gaps if a wall is uneven. Specialist worktops cannot be trimmed on site and so tolerances are built into measurements to allow for this. Material tolerances are +/- 2mm on all dimensions and expansion joints between materials and fixed objects is 3-5mm.



## Filling the gaps

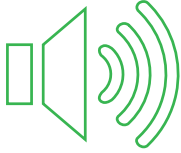
Walls, especially in older properties, can be bowed or uneven even after plastering. In these cases, we may need to cut or chisel into the wall for a perfect fit. This will be done as carefully and cleanly as possible - and we will leave a big enough gap to make room for tiling if that is how you plan to finish the wall. Upstands will be bonded to walls using silicone and joined together with a resin glue. A silicone bead finish will be used where the base of the upstand meets the worktop. For gaps where the back of the upstand meets a wall that is bowed for example, Installers will use decorator's caulk as a filler to a maximum of 5mm. Any gaps greater than this will be your responsibility.





### Replacement service

Although we take the maximum care, slabs of Xena Quartz® can break during delivery and installation. This is a rare event and if this happens we will replace the slab as soon as possible with no cost to you.



### Dust and noise

We make every effort to keep noise and dust to a minimum but since adjustments on site are necessary this is unavoidable. Once the installation is finished, our teams will clean up all dust in your kitchen and outside created by the cutting process. They will give your worktops a final clean. If dust is a problem please let us know before installation so we can discuss alternatives.

Please don't dry wipe your worktops as this could cause them to scratch.

## Sign-off and aftercare

---



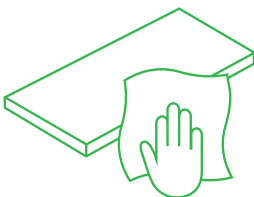
### Template check

Your Specialist Installer will walk you through the installation and ask you to check work done against the agreed template to ensure you are happy with the final product. If you are not happy with something, this is the time to let us know. Please do not tile or finish off your kitchen until all issues have been resolved.



### Final paperwork

The Specialist Installer will take photographs of the worktops in place and will ask you to sign the completion paperwork. This forms part of your warranty. We will also ask you to complete our customer satisfaction questionnaire.



### Caring for your worktop

We know you'll love your Xena Quartz® worktop and we want you to be able to enjoy its beautiful finish for many years. Your Installation Team will explain to you how to best care for your worktop and leave you with our comprehensive after-care kit. You'll also find more about caring for your worktop on page 15.



[wrenkitchens.com](http://wrenkitchens.com)

[f facebook.com/wrenkitchens](https://www.facebook.com/wrenkitchens) [t twitter.com/wrenkitchens](https://twitter.com/wrenkitchens)